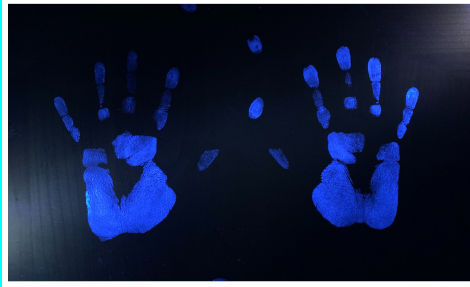


GLOGERM HYPERDOC



Part 1: Data Table		
Variable	Prediction of Effectiveness & YOUR REASON WHY	Observations
Do not wash hands		
Water only		
Water & soap		
Hand sanitizer only		
Hand sanitizer wipe		

Part 2: Reflection Questions	
Question:	Your Response:
On the paper provided, your group will create a scale of the variable indicating from most to least effective at penetrating germs.	
Explain your group's reasoning for the variables on the scales.	
What factors could have impacted your results?	